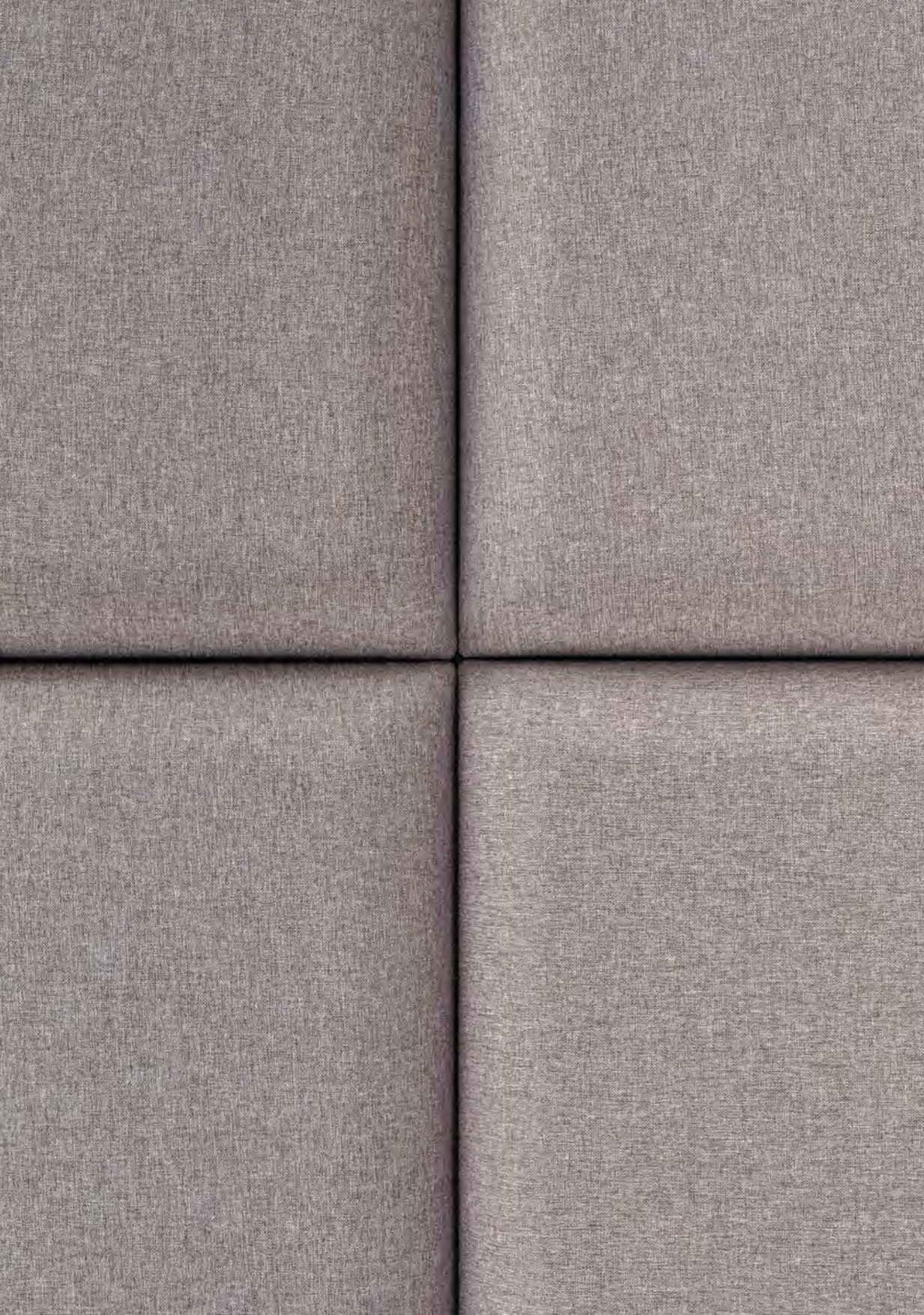


# Blocks

A celebration of classic  
geometrical shapes.







Blocks, our versatile family of acoustic panels, celebrate the classic geometrical shapes, adding structure & familiarity to any interior while offering the highest sound absorption properties.

DE

Blocks, unsere vielseitige Produktfamilie von Akustikplatten feiert die klassischen geometrischen Formen, verleiht dem Innenraum Struktur und Vertrautheit und bietet zugleich beste Schallabsorptionseigenschaften.

PL

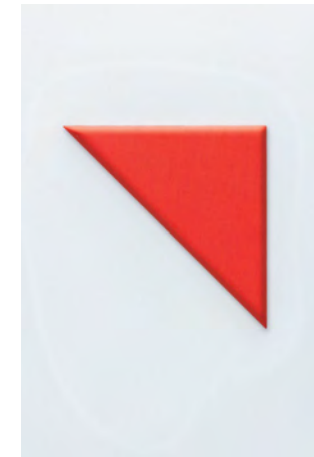
Blocks, nasza wszechstronna rodzina paneli akustycznych, to festiwal klasycznych, geometrycznych kształtów. Skutecznie pochłaniają hałas, jednocześnie kształtując strukturę i atmosferę każdego wnętrza.



Featuring 6 key shapes in various sizes, Blocks offer endless configuration possibilities. You can either keep it calm, making a simple repeat pattern, or let your imagination free and create a complex piece of „art”.



Square



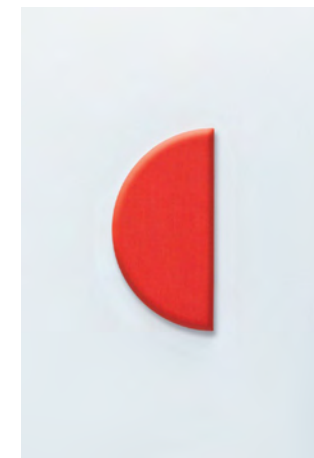
Triangle



Rectangle



Circle



Semi-circle



Hexagon

DE

Mit 6 Grundformen in verschiedenen Größen bieten Blocks endlose Konfigurationsmöglichkeiten. Sie können entweder Ruhe walten lassen und sich für ein einfaches wiederkehrendes Muster entscheiden oder Sie lassen Ihrer Fantasie freien Lauf und kreieren ein komplexes „Kunstwerk“.

PL

Blocks występują w 6 podstawowych kształtach i różnych rozmiarach, oferując niezmierzoną ilość konfiguracji. Można ułożyć z nich spokojną, regularną kompozycję lub puścić wodze fantazji, tworząc prawdziwe „dzieło sztuki”.

The beauty of Blocks emerges when multiple panels are hanged together on a wall, or on a ceiling. The meeting of their rounded edges creates a beautiful interplay of light and shadows, which can be further underlined by a tasteful selection of colors.

DE

Die Schönheit von Blocks kommt voll zur Geltung, wenn mehrere Paneele an der Wand oder Decke abgehängt werden. Die abgerundeten Kanten gehen ineinander über und es entsteht ein interessantes Zusammenspiel von Licht und Schatten, das durch eine stilichere Farbauswahl noch betont werden kann.

PL

Piękno kształtów Blocks staje się widoczne, kiedy kilka z nich powiesimy razem na ścianie lub suficie. Ich zaokrąglone krawędzie spotykają się tworząc malowniczą grę światła i cieni, którą można dodatkowo podkreślić przez gustowny dobór kolorów.



# Fabrics

## Evo

Composition: 100% polyester / Weight: 300g/m<sup>2</sup>



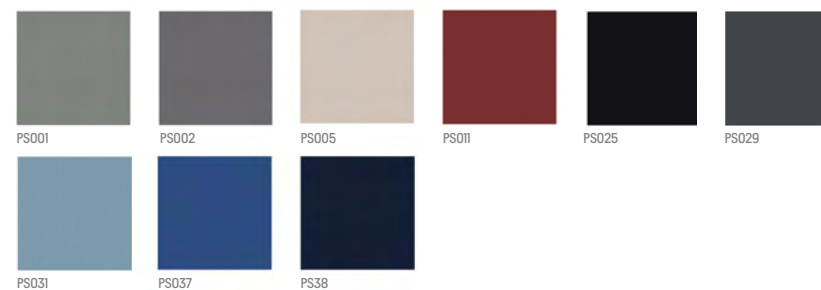
## Sprint by Camira - standard colours

Composition: 100% polyester / Weight: 325g/m<sup>2</sup>



## Sprint by Camira - longer delivery time

Composition: 100% polyester / Weight: 325g/m<sup>2</sup>



### MEDLEY by Gabriel - standard colours

Composition: 100% polyester / Weight: 364g/m<sup>2</sup>



### MEDLEY by Gabriel - longer delivery time

Composition: 100% polyester / Weight: 364g/m<sup>2</sup>



### SYNERGY by Camira - standard colours

Composition: 95% wool, 5% polyamide / Weight: 400g/m<sup>2</sup>



### SYNERGY by Camira - longer delivery time

Composition: 95% wool, 5% polyamide / Weight: 400g/m<sup>2</sup>



### SYNERGY by Camira - longer delivery time

Composition: 95% wool, 5% polyamide / Weight: 400g/m<sup>2</sup>





## REVIVE 1 by Kvadrat

Composition: 100% Recycled Flame Retardant Polyester / Weight: 300g/m<sup>2</sup>



## REMIX 2 by Kvadrat

Composition: 90% New wool, 10% Nylon / Weight: 300g/m<sup>2</sup>





# Blocks Wall / Ceiling

## Shapes & Sizes

(Thickness: 55mm)



### Square

600 × 600 mm  
900 × 900 mm  
1200 × 1200 mm



### Triangle

600 × 600 mm  
900 × 900 mm  
1200 × 1200 mm



### Rectangle

300 × 600 mm  
300 × 900 mm  
450 × 900 mm  
600 × 900 mm  
600 × 1200 mm



### Circle

600 mm  
900 mm  
1200 mm



### Semi-circle

600 mm  
900 mm  
1200 mm



### Hexagon

200 mm\*  
300 mm\*

\* side of hexagon

## Acoustic function



Absorption

## Acoustic performance



Low tones

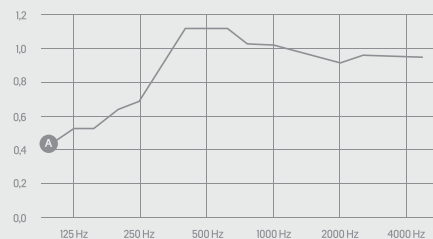


Mid tones



High tones

## Acoustic results



### Acoustic results according to norm ISO354:

Ultra high sound absorption properties.  
100% sound absorption.

· Blocks panels  $\alpha_w = 1,00$  [Class A]

[x] Frequency [Hz] : [y] Sound absorption coefficient [α]

# MuteDesign®

## Let us know if you need more information!

Visit our website [www.mute.design](http://www.mute.design)  
or write to us at [hello@mute.design](mailto:hello@mute.design)

**Era**

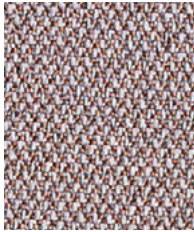
**camira**



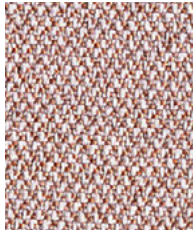
**Calendar**  
CSE19



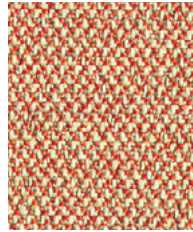
**Futurist**  
CSE01



**Occurrence**  
CSE23



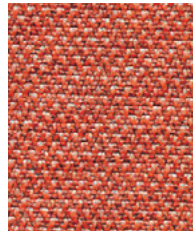
**Date**  
CSE24



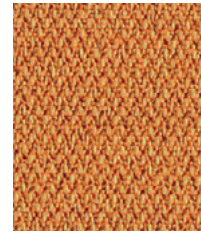
**Sequence**  
CSE25



**Generation**  
CSE02



**Turn**  
CSE26



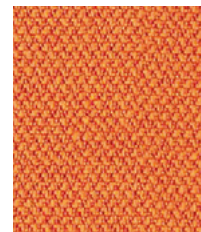
**Measure**  
CSE27



**Phase**  
CSE17



**Cycle**  
CSE06



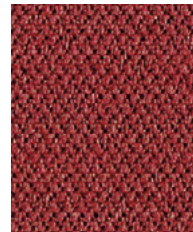
**Span**  
CSE05



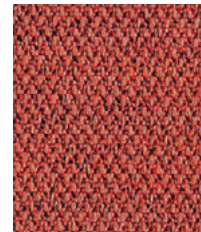
**History**  
CSE21



**Prime**  
CSE09

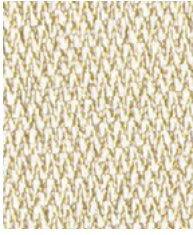


**Extent**  
CSE28

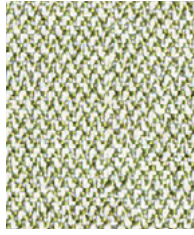


**Experience**  
CSE29

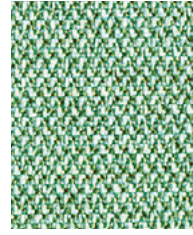




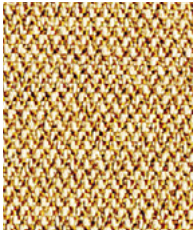
**Transition**  
CSE30



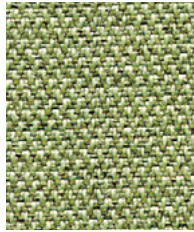
**Analogue**  
CSE33



**Notation**  
CSE36



**Splitsecond**  
CSE31



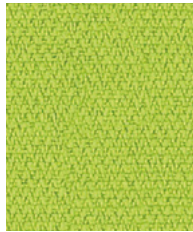
**Endurance**  
CSE34



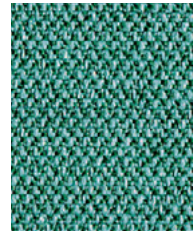
**Aeon**  
CSE20



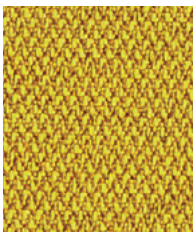
**Lifetime**  
CSE03



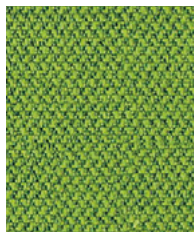
**Period**  
CSE07



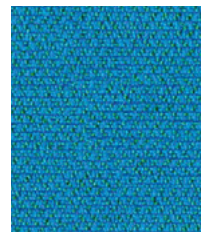
**Rest**  
CSE37



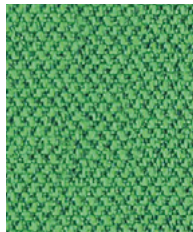
**Occasion**  
CSE32



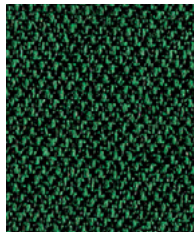
**Timelapse**  
CSE16



**Everlasting**  
CSE10



**Event**  
CSE18

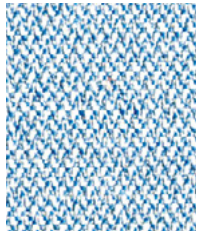


**Signature**  
CSE35

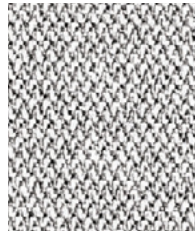


**Stage**  
CSE15

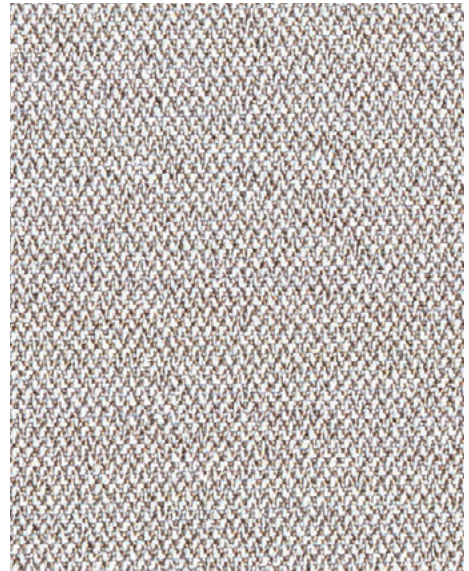
Photographic fabric scans are not colour accurate. Always request actual fabric samples before ordering.



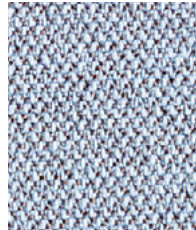
**Allowance**  
CSE38



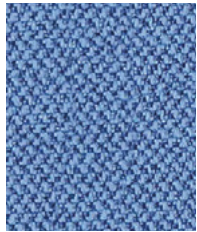
**Memo**  
CSE46



**Quota**  
CSE41



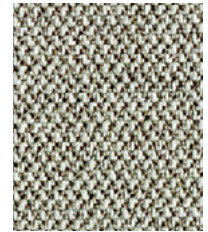
**Youth**  
CSE39



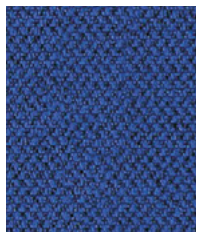
**Chapter**  
CSE08



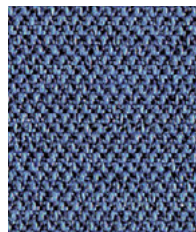
**Forecast**  
CSE11



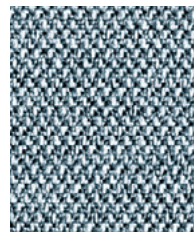
**Prompt**  
CSE45



**Perennial**  
CSE12



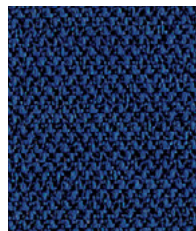
**Range**  
CSE42



**Late**  
CSE43



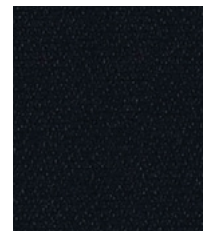
**Present**  
CSE13



**Maturity**  
CSE40



**Elapse**  
CSE44



**Forward**  
CSE14





Task seating



Soft seating

Cigarette  
& Match

Washable



Year guarantee

Era is a subtle, two tone polyester fabric containing stretch in both directions for ease of upholstery. The baby herringbone weave offers an understated contemporary texture while its colouring technique provides close up intrigue. The palette incorporates playful brights and sophisticated muted tones.



## Technical information

### UK

#### Industry Application

Workplace, Education

#### Composition

100% Polyester

#### Environment

Certified to OEKO-TEX® Standard 100  
Certified to Indoor Advantage™ Gold  
Non metallic dyestuffs

#### Width

140 cm minimum

#### Weight

320 g/m<sup>2</sup> ±5% (448 g/lin.m ±5%)

#### Abrasion Resistance\*

Heavy duty / 10 year guarantee  
Independently certified to ≥100,000  
Martindale cycles

#### Flammability

EN 1021 - 1 (cigarette)  
EN 1021 - 2 (match)  
BS 7176 Low Hazard  
EN 13501-1 Adhered Class B, s1, d0  
EN 13501-1 Un-adhered Class C, s1, d0  
*Note: Flammability performance is dependent on components used. Our certificates show what substrates have been used in our tests. For composite tests customers must ensure their complete furniture meets the necessary standards.*

#### Light Fastness

5 (ISO 105 - B02)

#### Fastness to Rubbing

Wet: 4, Dry: 4 (ISO 105 - X12)

#### Cleaning

Washable to 60°C. Vacuum regularly.  
Wipe clean with a damp cloth or shampoo using proprietary upholstery shampoo.

\*Abrasion testing produces a wide variability of results even from the same test sample. The independent certificate of ≥100,000 cycles is available on our website or from our customer service team. Internally we also specify this product at >100,000 cycles which we believe is realistic for repeatability of testing. Please be aware that abrasion testing alone is not a reliable indicator of the actual wear performance of fabrics. We're so confident in the durability of our products that we provide a robust 10 year guarantee (full details available).

Please note that seam performance is dependent on seam construction and needle and thread type. We recommend that appropriate sewing advice be taken.

Batch to batch variations in shade may occur within commercial tolerances. We reserve the right to alter technical specifications without notice. The Unregistered Design Rights and the Copyright in all designs are the exclusive property of Camira Fabrics Limited.

### D

#### Einsatzbereich

Büro, Bildung

#### Zusammensetzung

100% Polyester

#### Umweltfreundlich

Nach Zertifikat OEKO-TEX® Standard 100  
Nach Zertifikat Indoor Advantage™ Gold  
Nicht schwermetallhaltige Farbstoffe

#### Breite

140 cm nutzbare Breite

#### Gewicht

320 g/m<sup>2</sup> ±5% (448 g/lfd.m ±5%)

#### Scheuerfestigkeit\*

Schwerer Objekteinsatz / 10 Jahre Garantie  
Extern zertifiziert mit ≥100,000  
Scheuertouren Martindale

#### Feuersicherung

EN 1021 - 1 (Zigarettentest)  
EN 1021 - 2 (Streichholztest)  
BS 7176 Low Hazard  
EN 13501-1 Adhered Class B, s1, d0  
EN 13501-1 Un-adhered Class C, s1, d0  
*Bemerkung: Die Schwerentflammbarkeit hängt von den verwendeten Komponenten ab. Unsere Zertifikate zeigen auf, welche Substrate bei den Tests verwendet wurden. Bei Verbundtests muss sichergestellt sein, daß das komplette Möbel den entsprechenden Standards entspricht.*

#### Lichtechtheit

5 (ISO 105 - B02)

#### Reibechtheit

Nass: 4, Trocken: 4 (ISO 105 - X12)

#### Reinigung

Waschbar bis 60°C. Regelmässig staubsaugen. Dazu mit einem feuchten Tuch abwischen, oder mit einem speziellen Polsterschaum behandeln.

\*Die Scheuerfestigkeitsprüfung ergibt selbst bei gleichen Testmustern stark abweichende Ergebnisse. Das Zertifikat eines unabhängigen Prüfinstitutes über ≥100,000 Scheuertouren erhalten Sie von unserem Vertriebsinnendienst oder auf unserer Webseite. Intern spezifizieren wir auch dieses Produkt mit >100,000 Scheuertouren, die in der Serienfertigung als realistisch angenommen werden. Bitte nehmen Sie zur Kenntnis, dass die Scheuerfestigkeitsprüfung allein keine Aussagekraft über die Langlebigkeit eines Bezugsstoffes hat. Wir sind von der Langlebigkeit unserer Produkte überzeugt und bieten daher 10 Jahre Garantie (Details auf Anfrage).

Eine optimale Nahtausreissfestigkeit hängt von der Nahtfahne, der verwendeten Nadel und dem Näh-Garn ab. Wir empfehlen daher Nähversuche durchzuführen.

Handelsübliche Farbabweichungen können auftreten und berechtigen nicht zur Reklamation. Wir behalten uns die Änderung technischer Spezifikationen vor. Die registrierten und nicht registrierten Urheberrechte der Dessinierungen sind ausschliessliches Eigentum der Camira Fabrics Limited.

### F

#### Application industrielle

Lieu de travail, Education

#### Composition

100% Polyester

#### Écologique

Certifié à OEKO-TEX® Standard 100  
Certificat indépendant à Indoor Advantage™ Gold  
Teintures non métalliques

#### Largeur

140 cm minimum

#### Poids

320 g/m<sup>2</sup> ±5% (448 g/m.l ±5%)

#### Résistance à l'abrasion\*

Usage intense / garantie 10 ans  
Certificat indépendant ≥100,000 cycles  
Martindale

#### Flammabilité

EN 1021 - 1 (cigarette)  
EN 1021 - 2 (allumette)  
BS 7176 Low Hazard  
EN 13501-1 Adhered Class B, s1, d0  
EN 13501-1 Un-adhered Class C, s1, d0  
*Notez: La performance de flammabilité dépend des composantes utilisées. Nos certificats indiquent les substrats utilisés dans nos tests. Pour les tests composites, les clients doivent s'assurer que leurs meubles complets satisfont aux normes nécessaires.*

#### Solidité à la lumière

5 (ISO 105 - B02)

#### Solidité au Frottement

Mouillé: 4, Sec: 4 (ISO 105 - X12)

#### Nettoyage

Lavable jusqu'à 60°C. Aspirer régulièrement. Essuyer avec une étoffe humide ou nettoyer à l'aide d'un produit approprié pour tissus d'ameublement.

\*Les tests de résistance à l'abrasion proposent une large variété de résultat final, parfois sur le même échantillon de tissu. Le certificat indépendant de ≥100,000 cycles est disponible sur notre site internet; vous pouvez également contacter notre Service Clients. Nous validons également ce produit – en interne – à >100,000 cycles; ce qui est, d'après nous, plus réaliste dans le but d'obtenir une continuité égale des résultats de tests. Merci de noter que l'abrasion seule ne constitue pas un indicateur de confiance dans la performance du tissu à long terme. Nous avons une confiance absolue en nos produits et leur durabilité, c'est pour cela que nous vous offrons une garantie robuste de 10 ans.

Veuillez noter que la performance du joint dépend de sa construction ainsi que de l'aiguille et du type de fil utilisés.

Une variation de couleurs peut provenir (commercialement tolérable). Nous réservons le droit de changer les spécifications techniques sans préavis. Les Droits de Conception non-enregistrés et les droits d'auteur de tous les motifs sont la propriété exclusive de Camira Fabrics Limited.

### ES

#### Aplicación Industrial

Puesto de Trabajo, Educación

#### Composición

100% Poliéster

#### Ambiental

Certificado de OEKO-TEX® Standard 100  
Certificado de Indoor Advantage™ Gold  
Tintes no metálicos

#### Ancho

140 cm mínimo

#### Peso

320 g/m<sup>2</sup> ±5% (448 g/lin.m ±5%)

#### Resistencia a la abrasión\*

Garantía de 10 años con uso intenso  
independientemente del certificado de  
≥100,000 Ciclos Martindale

#### Inflamabilidad

EN 1021 - 1 (cigarillo)  
EN 1021 - 2 (cerilla)  
BS 7176 Low Hazard  
EN 13501-1 Adhered Class B, s1, d0  
EN 13501-1 Un-adhered Class C, s1, d0  
*Nota: El rendimiento de la inflamabilidad depende de los componentes usados. Nuestros certificados muestran qué substratos se han usado en nuestros tests. Para tests compuestos nuestros clientes deben asegurar si sus muebles cumplen la normativa al uso.*

#### Solidez a la luz

5 (ISO 105 - B02)

#### Solidez al rozamiento

Húmedo: 4, Seco: 4 (ISO 105 - X12)

#### Limpieza

Lavable hasta 60°C. Limpiar con aspiradora frecuentemente. Bien lavar con un paño húmedo o con un champú apropiado para tapicería.

\*Los Test de Abrasión producen unos resultados muy variables incluso con la misma muestra. El certificado de ≥100,000 ciclos Martindale está disponible en nuestra web o se puede pedir al Departamento Comercial. Internamente también certificamos este producto >100,000 ciclos, que pensamos que es lo más realista posible en este caso, con una repetición de resultados tan dispares. Tengan en cuenta que el Test de Abrasión solo no es un indicador fiable sobre el desgaste de un tejido. De hecho, estamos tan convencidos en la durabilidad de nuestros tejidos, que ofrecemos una garantía de 10 años (detalles completos disponibles).

Tenga en cuenta que el rendimiento de la costura depende de la construcción de la costura, además de la aguja y del tipo de rosca. Le recomendamos que se aconsejen para coser la costura.

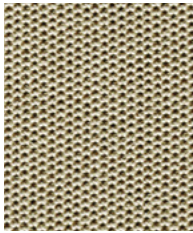
Las variaciones de lote a lote en la sombra se puede producir dentro de tolerancias comerciales. Nos reservamos el derecho a efectuar modificaciones técnicas sin previo aviso. Los derechos sobre los diseños no registrados y los derechos de autor en todos los diseños son propiedad exclusiva de Camira Fabrics Limited.



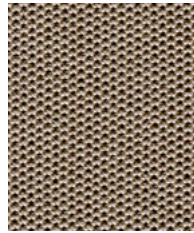
**Sprint**

**camira**

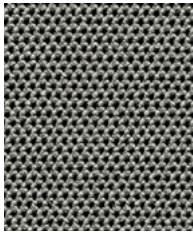
Photographic fabric scans are not color accurate. Always request actual fabric samples before ordering.



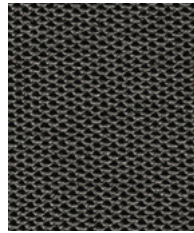
**Hurdle**  
PS001



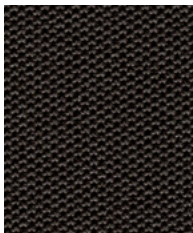
**Relay**  
PS002



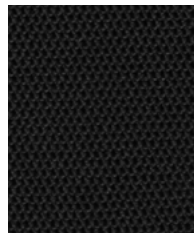
**Block**  
PS029



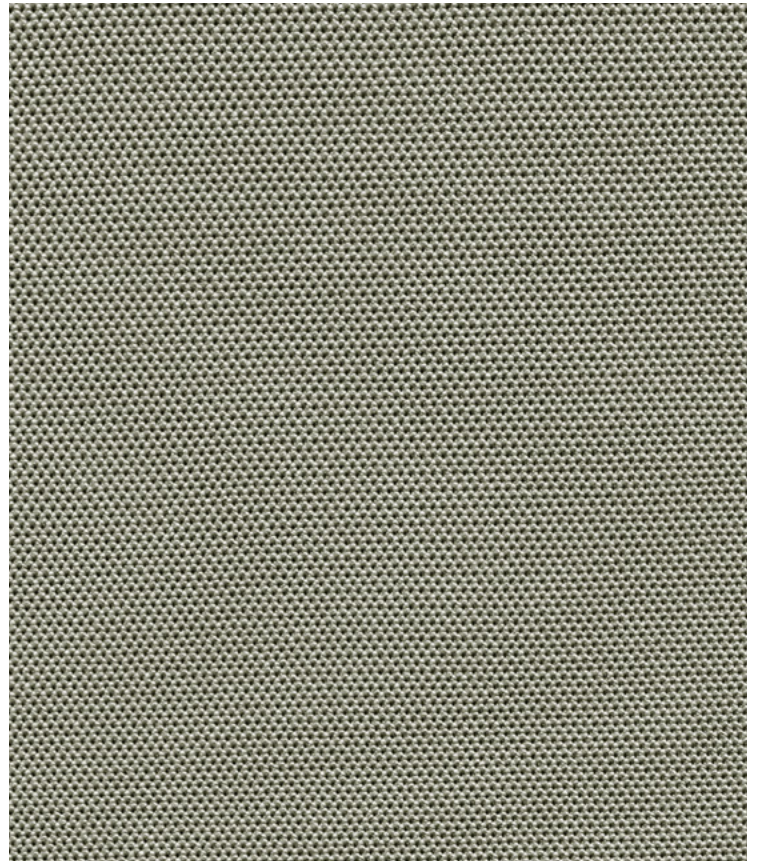
**Speed**  
PS030



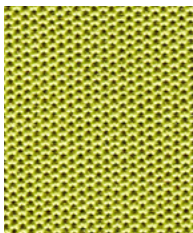
**Exercise**  
PS025



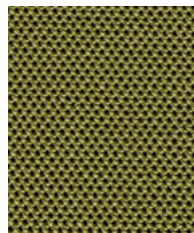
**Chase**  
PS004



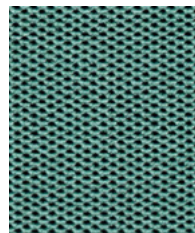
**Silver**  
PS028



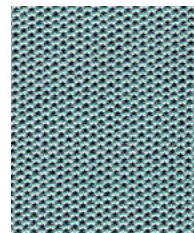
**Energy**  
PS026



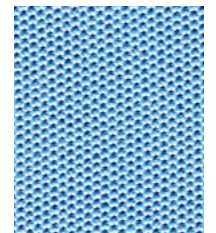
**Train**  
PS027



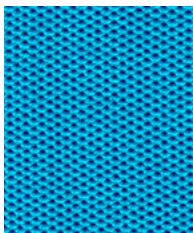
**Champion**  
PS041



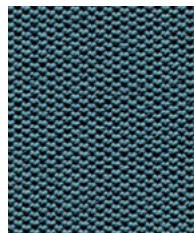
**Nutrition**  
PS039



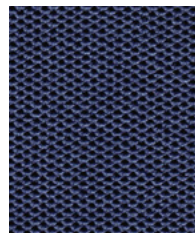
**Stretch**  
PS031



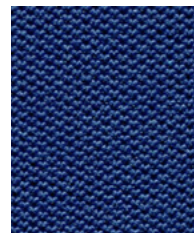
**Victory**  
PS032



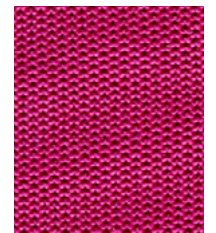
**Competitor**  
PS040



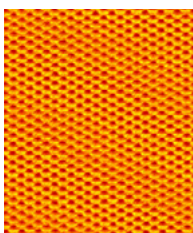
**Line**  
PS033



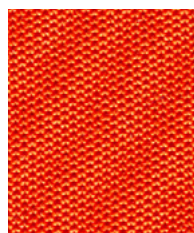
**Heat**  
PS038



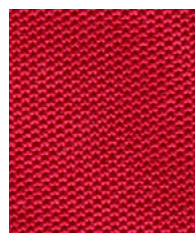
**Ready**  
PS018



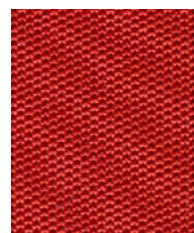
**Gold**  
PS015



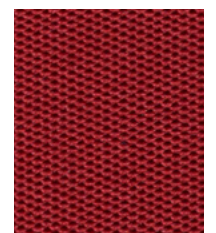
**Plunge**  
PS016



**Runner**  
PS017



**Start**  
PS010



**Finish**  
PS011





Task seating



Washable



Year guarantee

Sprint is a classic stretch knit product with a smooth macro cellular construction and a classic design that will stand the test of time. Sprint has multi-directional stretch for excellent upholsterability on task chair bases and backs.



Sprint meets the ACT voluntary Performance Guidelines and is classified for Heavy Duty Upholstery.

## Technical information

### EN

**Composition**  
100% Polyester

**Environment**  
Non metallic dyestuffs

**Width**  
59 inches minimum

**Weight**  
9<sup>1/2</sup> oz/sq yd ±5% (15<sup>3/4</sup> oz/running yd ±5%)

**Abrasion Resistance\***  
ASTM D4157 Wyzenbeek method, Heavy Duty Upholstery  
Independently certified to ≥100,000 double rubs  
Covered by a full and comprehensive 10 year guarantee (full details available)

**Flammability**  
California Technical Bulletin 117 - 2013  
NFPA 260 + UFAC Class 1  
BS 7176 Low Hazard  
*Note: Flammability performance is dependent on components used. Our certificates show what substrates have been used in our tests. For composite tests customers must ensure their complete furniture meets the necessary standards.*

**Color Fastness to Light**  
AATCC-16 (40 hours) Class 4

**Color Fastness to Crocking**  
AATCC-8 (Dry: 4, Wet: 3)

**Cleaning**  
W/S  
Washable to 140°F. Clean with a water-based cleaning agent or solvent: Depending on the stain, you can use a dry-cleaning solvent, the foam of a mild detergent, or upholstery shampoo.

\*Camira recognizes that the number of Wyzenbeek double rubs do not reflect the actual wear performance of fabrics. We're so confident in the durability of our products that we provide a robust 10 year guarantee (full details available). This product is externally certified, details of which are on our website and available from our customer services team.

Multiple factors affect fabric durability and appearance retention, including end-user application and correct maintenance. Results above 100,000 double rubs have not been shown to be a reliable indicator of increased fabric lifespan.

Batch to batch variations in shade may occur within commercial tolerances. We reserve the right to alter technical specifications without notice. The Unregistered Design Rights and the Copyright in all designs are the exclusive property of Camira Fabrics Limited.

### F

**Composition**  
100% Polyester

**Écologique**  
Teintures non métalliques

**Largeur**  
59 pouces minimum

**Poids**  
9<sup>1/2</sup> oz/sq yd ±5% (15<sup>3/4</sup> oz/yd.lin ±5%)

**Résistance à l'abrasion\***  
ASTM D4157 Wyzenbeek method, Heavy Duty Upholstery  
Certificat indépendant ≥100,000 double frottement  
Avec une garantie totale de durabilité de 10 ans (renseignements complémentaires disponibles)

**Flammabilité**  
California Technical Bulletin 117 - 2013  
NFPA 260 + UFAC Class 1  
BS 7176 Low Hazard  
*Notez: La performance de flammabilité dépend des composantes utilisées. Nos certificats indiquent les substrats utilisés dans nos tests. Pour les tests composites, les clients doivent s'assurer que leurs meubles complets satisfont aux normes nécessaires.*

**Solidité à la Lumière**  
AATCC-16 (40 heures) Class 4

**Solidité à la Crocking**  
AATCC-8 (Sec: 4, Mouillé: 3)

**Nettoyage**  
W/S  
Lavable jusqu'à 140°F. Nettoyer avec un produit d'entretien à base d'eau: en fonction de la tâche, vous pouvez nettoyer à sec, à l'aide d'un détergent ou bien avec du shampoing pour meubles.

\*Camira reconnaît que le nombre de Wyzenbeek double frottement ne reflète pas la performance de l'usure réelle des tissus. Nous sommes tellement confiants dans la pérennité de nos produits que nous offrons une garantie solide de 10 ans (plus de détails disponibles). Cette gamme est certifiée externe, vous pouvez d'ailleurs trouver plus de détails sur notre site internet ou en contactant un membre de notre Service Clients.

La durabilité d'un tissu et sa capacité à conserver son aspect sont affectées par divers facteurs, y compris son environnement d'installation et son entretien. Un résultat de 100 000 ou plus (Wyzenbeek double frottement) n'est pas un indicateur fiable quant à la longévité d'un tissu.

Une variation de couleurs peut provenir (commerciallement tolérable). Nous réservons le droit de changer les spécifications techniques sans préavis. Les Droits de Conception non-enregistrés et les droits d'auteur de tous les motifs sont la propriété exclusive de Camira Fabrics Limited.

### ES

**Composición**  
100% Poliéster

**Ambiental**  
Tintes no metálicos

**Ancho**  
59 pulgadas mínimo

**Peso**  
9<sup>1/2</sup> oz/sq yd ±5% (15<sup>3/4</sup> oz/lin.y ±5%)

**Resistencia a la abrasión\***  
ASTM D4157 Wyzenbeek method, Heavy Duty Upholstery  
independientemente del certificado de ≥100,000 rozamiento doble  
Con garantía total de uso 10 años (más información disponible bajo consulta)

**Inflamabilidad**  
California Technical Bulletin 117 - 2013  
NFPA 260 + UFAC Class 1  
BS 7176 Low Hazard  
*Nota: El rendimiento de la inflamabilidad depende de los componentes usados. Nuestros certificados muestran qué substratos se han usado en nuestros tests. Para tests compuestos nuestros clientes deben asegurar si sus muebles cumplen la normativa al uso.*

**Solidez a la Luz**  
AATCC-16 (40 horas) Class 4

**Solidez al Rozamiento**  
AATCC-8 (Seco: 4, Húmedo: 3)

**Limpieza**  
W/S  
Lavable hasta 140°F. Lavar con un producto de limpieza neutro o solvente: en función de la suciedad o mancha, se puede limpiar con un producto de limpieza en seco, espuma templada o producto de limpieza de sofás.

\*Camira reconoce que el número de Wyzenbeek rozamiento doble no refleja el rendimiento real del desgaste de los tejidos. Estamos tan seguros de la durabilidad de nuestros tejidos que ofrecemos una garantía íntegra de 10 años (los detalles completos están disponibles). Esta gama está certificada externamente, todos los detalles están disponibles en nuestra web y en el departamento de atención al cliente.

Muchos factores afectan la durabilidad y el aspecto del tejido, incluyendo el usuario final y el mantenimiento adecuado. Por encima de 100.000 (Wyzenbeek rozamiento doble), no se ha demostrado que indique una mayor durabilidad de los tejidos.

Se reserva el derecho de modificar las especificaciones técnicas sin previo aviso. Los derechos sobre dibujos no registrados y los derechos de autor sobre todos los dibujos son propiedad exclusiva de Camira Group Inc.

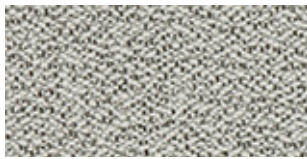




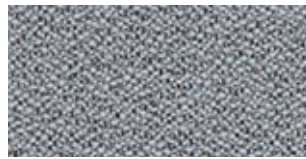
**MICA™**

---

by Gabriel



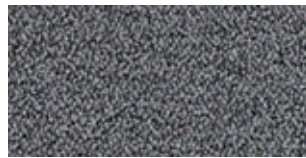
140 cm: 2496-60000  
170 cm: 2500-60000



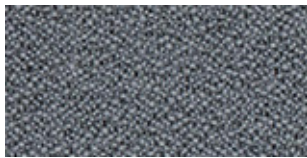
140 cm: 2496-60004  
170 cm: 2500-60004



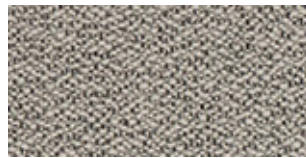
140 cm: 2497-60000  
170 cm: 2501-60000



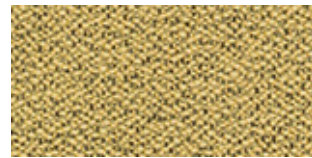
140 cm: 2497-60004  
170 cm: 2501-60004



140 cm: 2496-60002  
170 cm: 2500-60002



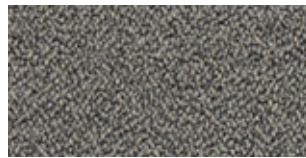
140 cm: 2496-61008  
170 cm: 2500-61008



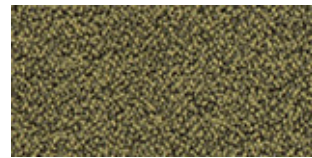
140 cm: 2496-62096



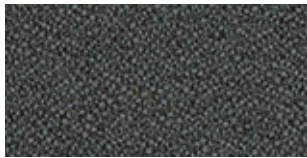
140 cm: 2497-60002  
170 cm: 2501-60002



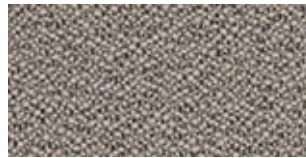
140 cm: 2497-61008  
170 cm: 2501-61008



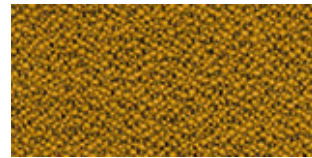
140 cm: 2497-62096



140 cm: 2496-60021  
170 cm: 2500-60021



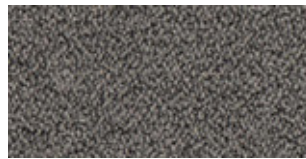
140 cm: 2496-61011  
170 cm: 2500-61011



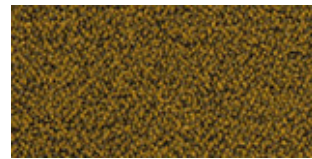
140 cm: 2496-62095



140 cm: 2497-60021  
170 cm: 2501-60021

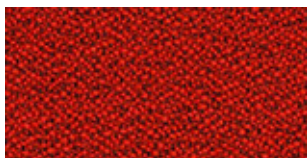


140 cm: 2497-61011  
170 cm: 2501-61011

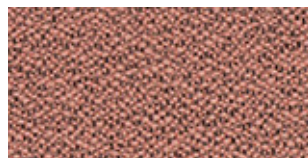


140 cm: 2497-62095

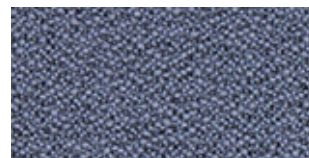
All colours are available in width 140 cm/55". 26 colours are also available in width 170 cm/67".  
Contact customer service for other colours.



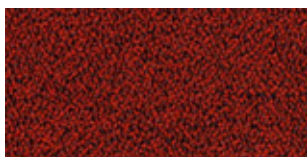
140 cm: 2496-64146  
170 cm: 2500-64146



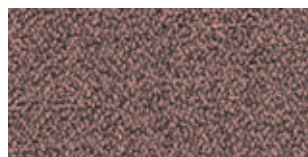
140 cm: 2496-64183



140 cm: 2496-65112



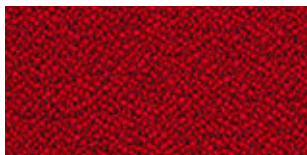
140 cm: 2497-64146  
170 cm: 2501-64146



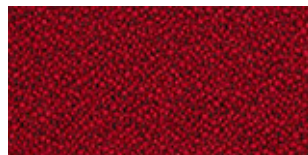
140 cm: 2497-64183



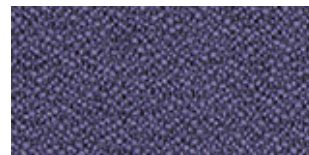
140 cm: 2497-65112



140 cm: 2496-64119



140 cm: 2496-64029



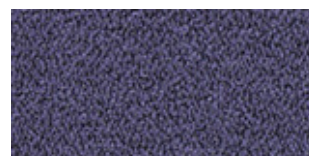
140 cm: 2496-66188



140 cm: 2497-64119



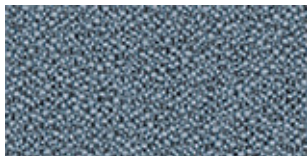
140 cm: 2497-64029



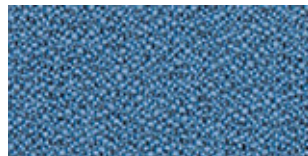
140 cm: 2497-66188

All colours are available in width 140 cm/55". 26 colours are also available in width 170 cm/67".  
Contact customer service for other colours.

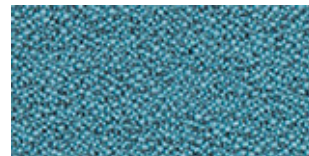




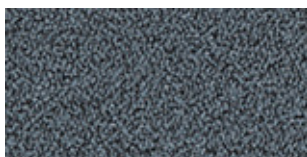
140 cm: 2496-66031



140 cm: 2496-66030  
170 cm: 2500-66030



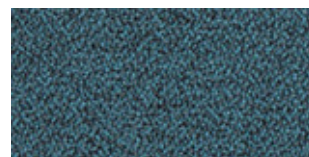
140 cm: 2496-67070  
170 cm: 2500-67070



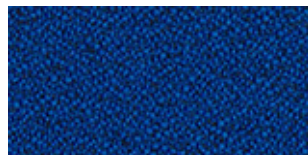
140 cm: 2497-66031



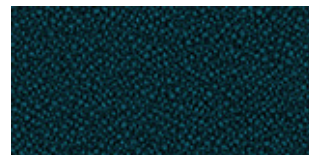
140 cm: 2497-66030  
170 cm: 2501-66030



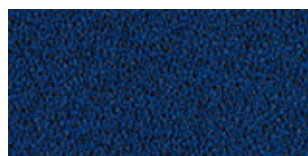
140 cm: 2497-67070  
170 cm: 2501-67070



140 cm: 2496-66006  
170 cm: 2500-66006



140 cm: 2496-67042

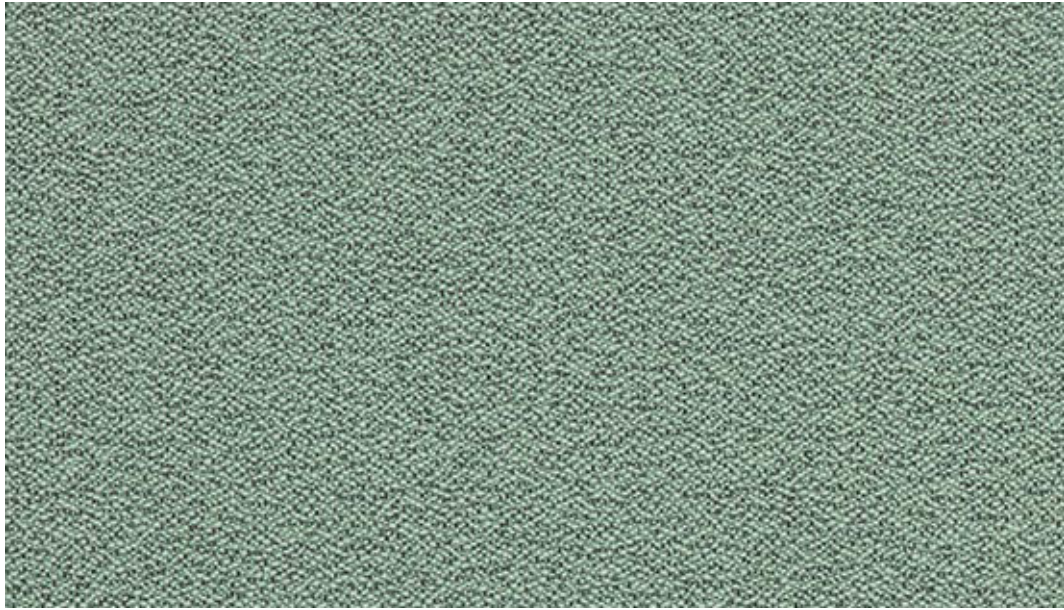


140 cm: 2497-66006  
170 cm: 2501-66006

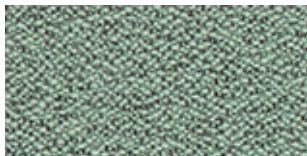


140 cm: 2497-67042

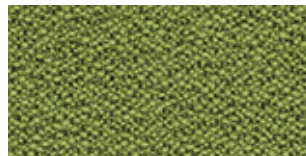
All colours are available in width 140 cm/55". 26 colours are also available in width 170 cm/67".  
Contact customer service for other colours.



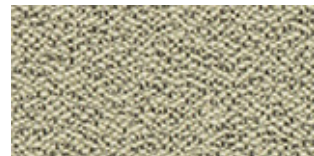
140 cm: 2496-67015  
170 cm: 2500-67015



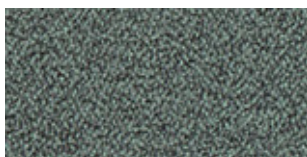
140 cm: 2496-67015  
170 cm: 2500-67015



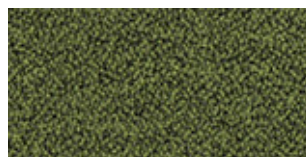
140 cm: 2496-68145  
170 cm: 2500-68145



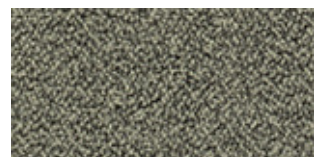
140 cm: 2496-62093  
170 cm: 2500-62093



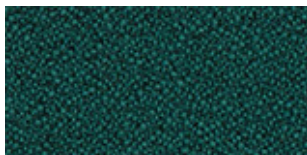
140 cm: 2497-67015  
170 cm: 2501-67015



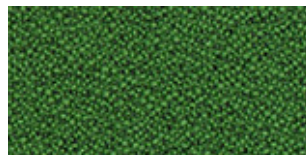
140 cm: 2497-68145  
170 cm: 2501-68145



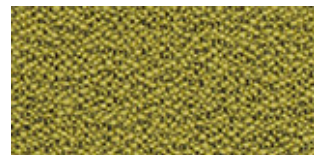
140 cm: 2497-62093  
170 cm: 2501-62093



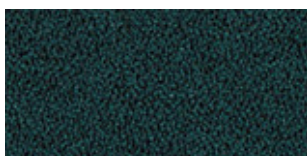
140 cm: 2496-67017



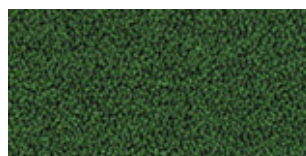
140 cm: 2496-68146



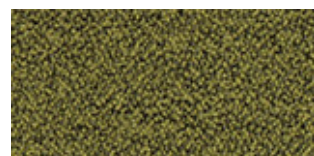
140 cm: 2496-62048



140 cm: 2497-67017



140 cm: 2497-68146



140 cm: 2497-62048

All colours are available in width 140 cm/55". 26 colours are also available in width 170 cm/67".  
Contact customer service for other colours.

# MICA™

---

Mica specifications: [www.gabriel.dk](http://www.gabriel.dk)

Please be aware that the PDF colour shades can appear different from the real fabric colours.  
We advise you to request actual fabric samples before ordering.